



# **Summary Report for Incident Activity during 2025 Bonfire Period**

**AUDIENCE**

**AUTHORITY  
STRATEGIC LEADERSHIP TEAM  
TEAMS INVOLVED IN BONFIRE PLAN**

This is an unpublished work, the Copyright in which vests in Merseyside Fire & Rescue Service. All rights reserved. The information contained herein is the property of Merseyside Fire & Rescue Service, and is supplied without liability for errors or omissions. No part may be reproduced or used except as authorised by Contract or other written permission. The Copyright and the foregoing restriction on reproduction and use extend to all media in which information may be embodied ©

**COMMUNITY RISK MANAGEMENT DIRECTORATE  
STRATEGY & PERFORMANCE DIRECTORATE**

*Date work received: 8<sup>th</sup> November 2025*

*Date work completed: 17<sup>th</sup> November 2025*

*Page 1 of 27*

*D:\Moderngov\Data\AgendaItemDocs\8\8\5\AI00017588\kav3rjqz.docx*

## Document Control

### Sign-Off List

	Position
	Deputy Chief Fire Officer
	Director of Prevention
	Director of Strategy & Performance
	Group Manager – Prevention

### Distribution List

Name	Position	I / R
Authority		
Senior Leadership Team		
Bonfire Planning Team		

### Related Documents

Reference No.	Title	Author	Version & Date

### Ownership

Has it been agreed with the client that this is a publicly owned document?

Yes/~~No~~

If Yes please state URL: <http://www.merseyfire.gov.uk>

If No please state reason why:

<b>1. AGREEMENT .....</b>	<b>3</b>
<b>2. SUMMARY.....</b>	<b>4</b>
<b>3. INTRODUCTION.....</b>	<b>5</b>
<b>4. METHODOLOGY.....</b>	<b>5</b>
<b>5. RESULTS .....</b>	<b>6</b>
<b>5.1 Retrospective Analysis.....</b>	<b>6</b>
<b>5.2 Incident Breakdown.....</b>	<b>7</b>
<b>5.3 Temporal Analysis .....</b>	<b>7</b>
<b>5.4 Location Analysis .....</b>	<b>9</b>
<b>5.5 Violence at Work.....</b>	<b>11</b>
<b>5.6 Deprivation Analysis .....</b>	<b>12</b>
<b>6. APPENDICES.....</b>	<b>13</b>

## **1. Agreement**

For the purpose of this report the following agreement was made between the client and the Strategy & Performance Directorate.

This work was requested by Area Manager Mark Thomas and received 8<sup>th</sup> November 2025.

The Manager<sup>1</sup> has approved this report/ piece of work can be undertaken by the Strategy & Performance Directorate.

If the scope of the work changes, authorisation must be again obtained and would be noted within the version control document sheet.

It was agreed that this report would be produced in draft format by December 2025 and would be sent electronically to the Director of Strategy & Performance and AM Mark Thomas for comment.

The Manager / Client agreed that their comments would be received back by December 2025. The final report, which will always be in PDF format, would be produced by December 2025, subject to receiving comments.

---

<sup>1</sup> Deb Appleton

## 2. Summary

This report provides a summary analysis of deliberate secondary fires and incidents of violence at work across Merseyside during the 2025 Bonfire Period. For the purpose of this report, the Bonfire Period is defined as the 19<sup>th</sup> October – 7<sup>th</sup> November, and includes comparisons to previous years for benchmarking purposes.

The headlines from this report can be summarised as follows:

- The key dates during 2025 were: Thursday 30<sup>th</sup> October, Friday 31<sup>st</sup> October and Wednesday 5<sup>th</sup> November.
- During the 2025 bonfire period, **123** deliberate secondary fires were attended by Merseyside Fire & Rescue crews. When compared to the 2024 period, this is a reduction of **234** incidents or **-65.5%**.
- Performance at a district level was as follows:
  - Knowsley saw **22** incidents, which is a reduction of **18** incidents or **-45%**.
  - Liverpool as a whole saw **44** incidents, a reduction of **111** incidents or **-71.6%** compared to 2024.
    - North Liverpool saw **23** incidents, a reduction on 2024's performance of **93** incidents or **-75.3%**.
    - South Liverpool saw **21** incidents, which is **41** fewer incidents than 2024 or **-66.1%**.
  - Sefton saw **12** incidents, **32** (**-72.7%**) fewer than in 2024.
  - St Helens saw **18** incidents, a reduction on 2024's performance of **26** incidents or **-59.1%**.
  - Wirral saw **27** incidents, which is **47** or **-63.5%** fewer than 2024.
- When aggregated proportionally to incidents per 10,000 population – Sefton had the fewest incidents with **0.4**. Knowsley had the highest proportion of **1.4** incidents per 10,000 population.
- On the 5<sup>th</sup> November 2025, crews attended **16** incidents. 10 of these incidents involved intentional burning/bonfires.
- The top wards for incidents attended were: Bidston & St James (**22**) followed by Northwood (**6**), Garston (**5**) as well as Linacre and Festival Gardens with **4** each.
- When compared to the previous year, most stations saw reductions in incidents, the exceptions were 11 - Liverpool City and 42 – Kirkby with minor increases of 3 and 1 respectively.
- There were **4** incidents of violence at work during the 2025 bonfire period, 6 fewer than 2024.
- The latter part of the period was particularly wet for the time of year<sup>2</sup>

Date	15 <sup>th</sup> Oct to 21 <sup>st</sup> Oct	22 <sup>nd</sup> Oct to 28 <sup>th</sup> Oct	29 <sup>th</sup> Oct to 4 <sup>th</sup> Nov	5 <sup>th</sup> Nov to 12 <sup>th</sup> Nov
Rainfall	18mm	24mm	71mm	32mm

<sup>2</sup> Figures taken from hydrology reports published by the Environment Agency on a weekly basis. This version shows rainfall covering 2024 Bonfire Period [Rainfall and river flow summary 13 November to 19 November 2024](#)

### **3. Introduction**

Traditionally the bonfire period leads to heightened numbers of incidents, specifically deliberate secondary fires and violence at work. This report presents an analysis of incidents during the 2025 Bonfire Period in Merseyside, contrasted with the 2024 period as well as historical retrospectives.

For the purpose of this report, the bonfire period covers the following period: 19<sup>th</sup> October to 7<sup>th</sup> November, allowing for a direct date-to-date comparison.

### **4. Methodology**

To identify and analyse any trends in incidents during the 2025 Bonfire Period the following methodologies were followed:

- The period of analysis covered from 00:00:00hrs on 19<sup>th</sup> October to 23:59:59hrs on 7<sup>th</sup> November.
- Fire related incidents analysed within this report are all deliberate secondary fires<sup>3</sup> as recorded by Merseyside Fire & Rescue Service mobilisation system Vision. Instances of Violence at Work have been taken from the OSHENS Health and Safety reporting system.
- Deprivation data used within this report is based on Indices of Deprivation 2019 (obtained from Department for Communities and Local Government).
- Population figures are based on mid-2024 and census 2023 population estimates published by Office for National Statistics
- The analytical tools adopted in this report include:
  - MapInfo 17 Mapping software – used to identify hotspot areas for incidents and used to filter data according to district and ward level.
  - Crystal Reports – utilised to extract raw data and information from the Vision mobilising system.
  - Excel 365 – used to analyse raw data.

It should be noted that the majority of the analysis contained within this report will be presented at the Merseyside level. Six additional local authority appendices<sup>4</sup> supplement this main report, (section 6).

---

<sup>3</sup> Deliberate secondary fires are based on FSEC (Fire Service Emergency Cover). Incident codes include: 04 01 – Derelict Building, 04 02 – Grassland, 04 03 – Bonfires, 04 04 – Outdoor Structure, 04 05 – Refuse, 04 06 – Derelict Vehicle.

<sup>4</sup> Liverpool is divided into Liverpool North and Liverpool South.

5. Results

5.1 Retrospective Analysis

Chart 1: 10 Year retrospective analysis of deliberate secondary fires

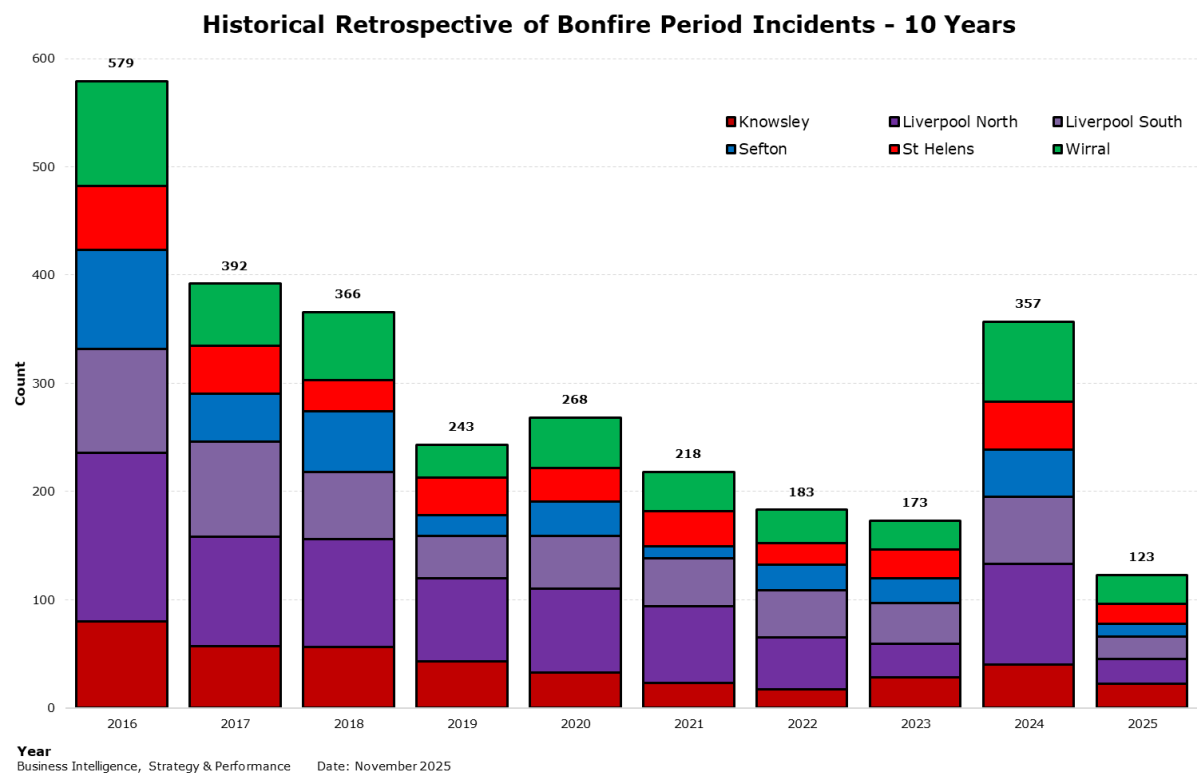


Chart 1 identifies that during the 2025 bonfire period the number of deliberate secondary fire incidents attended by Merseyside Fire and Rescue Service was 123. This is a large reduction of 234 incidents (65.5%) on the previous year.

The 123 incidents attended during the 2025 bonfire period is the lowest number of incidents attended for the period in known history, with all districts seeing notable reductions in incidents attended.

## 5.2 Incident Breakdown

Table 1: Breakdown of incident types attended during 2024 and 2025 bonfire period

Incident	2024	2025	Change	% Change
04 01 Derelict Building	3	4	1	33.3%
04 02 Grassland	16	3	-13	-81.3%
04 03 Intentional Burning / Bonfire	126	61	-65	-51.6%
04 04 Outdoor Structure	10	7	-3	-30.0%
04 05 Refuse Fire	202	48	-154	-76.2%
04 06 Derelict Vehicle	0	0	0	0.0%
<b>Grand Total</b>	<b>357</b>	<b>123</b>	<b>-234</b>	<b>-65.5%</b>

Table 1 identifies that most deliberate secondary fires attended were “04 03 Intentional Burning / Bonfire” with 61 incidents (a reduction of 65 incidents or 51.6%) – this incident type accounts for 50% of total incidents. This was then followed by “04 05 Refuse Fire” with 48 incidents, a notable reduction of 154 incidents or 76.2%.

Concerning other incident types there were further reductions in “04 02 Grassland” and “04 04 Outdoor Structure”. The “04 01 Derelict Building” incident type saw an increase of 1 and “04 06 Derelict Vehicle” saw no (zero) incidents.

## 5.3 Temporal Analysis

Chart 2: Comparison of incidents by Day

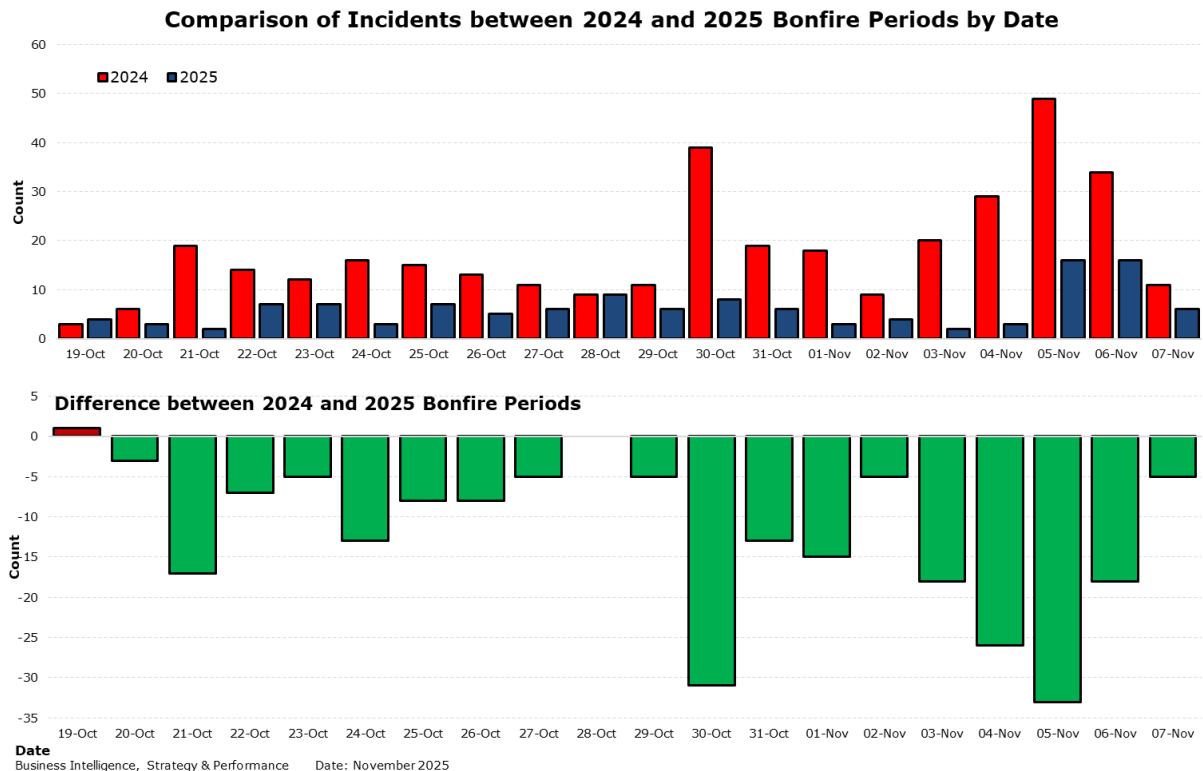


Chart 2 provides a comparison of deliberate secondary fire incidents by day between 2024 and 2025. The chart shows that incidents remained at a low level throughout the period, with the greatest number of incidents jointly occurring on the 5<sup>th</sup> and 6<sup>th</sup> November with 16 per day. The pre-Halloween period saw a minor peak in activity, though far lower than the previous year.

The lower chart shows that most days during the period saw a reduction in incidents, except for the 19<sup>th</sup> October, which saw an increase of 1.

Chart 3: Cumulative Analysis of Deliberate Secondary Fires

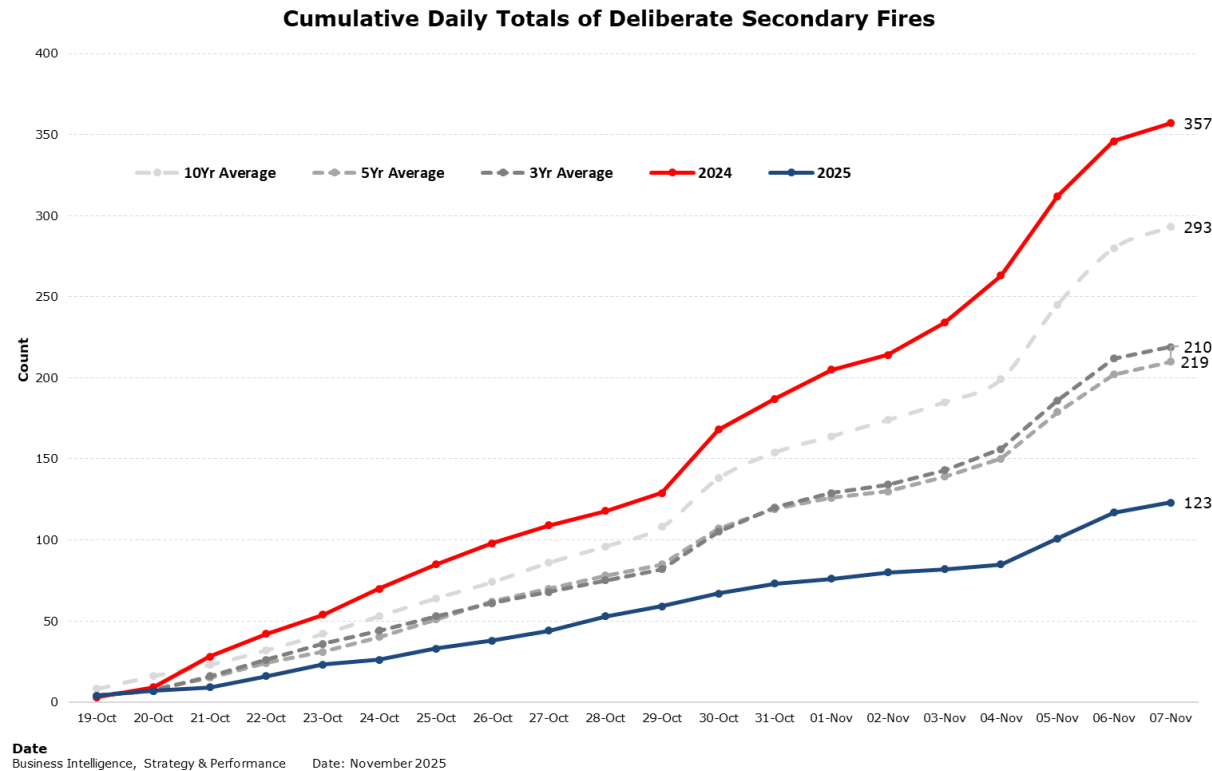


Chart 3 provides a cumulative analysis of deliberate secondary fire incidents through the 2025 period, contrasted with: 2024, and the 3, 5 and 10-year averages. The chart shows that performance for 2025 was exceptional, being far below the other benchmark figures.

Table 2: 5<sup>th</sup> November Analysis

Incident	2016	2017	2018	2019	2020	2021	2022	2023	2024	2025
04 01 Derelict Building	1	0	2	1	0	0	0	0	0	0
04 02 Grassland	5	1	2	1	0	1	0	0	0	0
04 03 Intentional Burning / Bonfire	41	17	21	19	68	11	13	6	29	10
04 04 Outdoor Structure	4	3	2	0	0	1	1	0	0	1
04 05 Refuse Fire	30	39	31	14	10	13	18	18	20	5
04 06 Derelict Vehicle	0	0	0	0	0	0	0	0	0	0
Grand Total	81	60	58	35	78	26	32	24	49	16
Total for each year	579	392	366	243	268	218	183	173	357	123
% of incidents for 5 November	14.0%	15.3%	15.8%	14.4%	29.1%	11.9%	17.5%	13.9%	13.7%	13.0%

Table 2 identifies that on 5<sup>th</sup> November 2025, 16 deliberate secondary fires were attended, which is two thirds less than the previous year where 49



incidents were attended. This is 80.2% lower than the recent high of 81 in 2016.

## 5.4 Location Analysis

Table 3: Comparison of incidents attended by district, between 2024 and 2025 bonfire periods (*with incidents per 10,000 population*)<sup>5</sup>

District	2024	2025	Change	% Change
Knowsley	40 (2.5)	22 (1.4)	-18 (-1.2)	-45.0%
Liverpool	155 (3.1)	44 (0.9)	-111 (-2.2)	-71.6%
<i>Liverpool North</i>	93	23	-70	-75.3%
<i>Liverpool South</i>	62	21	-41	-66.1%
Sefton	44 (1.6)	12 (0.4)	-32 (-1.1)	-72.7%
St Helens	44 (2.4)	18 (1)	-26 (-1.4)	-59.1%
Wirral	74 (2.3)	27 (0.8)	-47 (-1.5)	-63.5%
<b>Grand Total</b>	357 (2.5)	123 (0.8)	-234 (-1.6)	-65.5%

Table 3 provides a breakdown of incidents attended by district, comparing the 2024 and 2025 periods. In summary, the table provides the following results:

- Knowsley – a decrease of 18 (-45%)
- Liverpool – a decrease of 112 (-71.6%)
  - Liverpool North – fell by 71 (-75.3%)
  - Liverpool South – fell by 41 (-66.1%)
- Sefton – a decrease of 32 (-72.7%)
- St Helens – a decrease of 26 (-59.1%)
- Wirral – a decrease of 47 (-63.5%)

When aggregated to incidents per 10,000 population; Sefton saw the fewest incidents during 2025 with 0.4 incidents per 10,000 population. By contrast, Knowsley, closely followed by St Helens had the greatest numbers with 1.4 and 1 per 10,000 population respectively.

Table 4: Top wards for deliberate secondary fires during 2025 bonfire period

Rank	Ward	District	2024	2025	Change	% Change
1st	Bidston & St James	Wirral	16	10	-6	-37.5%
2nd	Northwood	Knowsley	4	6	2	50.0%
3rd	Garston	Liverpool South	6	5	-1	-16.7%
=4th	Linacre	Sefton	10	4	-6	-60.0%
=4th	Festival Gardens	Liverpool South	2	4	2	100.0%
=6th	Belle Vale	Liverpool South	22	3	-19	-86.4%
=6th	Leasowe & Moreton East	Wirral	8	3	-5	-62.5%
=6th	Page Moss	Knowsley	6	3	-3	-50.0%
=6th	Derby	Sefton	4	3	-1	-25.0%
=6th	Thatto Heath	St Helens	2	3	1	50.0%
=6th	Claughton	Wirral	1	3	2	200.0%
=6th	Halewood North	Knowsley	1	3	2	200.0%

<sup>5</sup> The proportion has been rounded to the one decimal place

Table 4 shows the top 12 wards for deliberate secondary fires during the 2025 bonfire period. The table identifies that Bidston & St James had the largest number of incidents (10) followed by: Northwood (6) and Garston (5).

The table identifies that Wirral, Knowsley and Liverpool South each had wards within the top 12, with 3 each. Sefton had 2 wards and St Helens with 1. In previous years Liverpool North had several wards within the top 12, however this year there were none. This shows how disparate incident locations were within the sub district.

Table 5: Historical Ward Analysis<sup>6</sup>

Rank	2016	2017	2018	2019	2020	2021	2022	2023	2024	2025
1	Birkenhead & Tranmere	Springwood	Linacre	Shevington	Vauxhall	Dingle	Birkenhead & Tranmere	Town Centre	Belle Vale	Bidston & St James
2	Town Centre	Seacombe	Cherryfield	Town Centre	Derby	Town Centre	Walton	Birkenhead & Tranmere	Norris Green	Northwood
3	Norris Green	Birkenhead & Tranmere	Northwood	Norris Green	Parr	Bidston & St James	Garston	Speke	Bidston & St James	Garston
4	Bidston & St James	Linacre	Bidston & St James	Northwood	Birkenhead & Tranmere	Norris Green	Rock Ferry	Garston	Birkenhead & Tranmere	Linacre
5	Belle Vale	Croxteth	Walton	Vauxhall	Rock Ferry	Birkenhead & Tranmere	Linacre	Belle Vale	Walton	Festival Gardens
6	Croxteth	Dingle	Birkenhead & Tranmere	Croxteth	Belle Vale	Shevington	Thatto Heath	Bromborough	Sutton	Belle Vale
7	Dingle	Halewood South	Speke	Knotty Ash & Dovecot Park	Northwood	Rock Ferry	Speke	Stockbridge	New Brighton	Leasowe & Moreton East
8	Seacombe	Town Centre	Bromborough	Bold	Garston	Parr	Whiston & Cronton	Cherryfield	Linacre	Page Moss
9	Ford	Cherryfield	Ford	Walton	Speke	County	Earlestown	Northwood	Kensington & Fairfield	Derby
10	Northwood	Norris Green	Norris Green	Dingle	Linacre	West Park	Gateacre	City Centre North	Leasowe & Moreton East	Thatto Heath

Table 5 provides a historical look at the top 10 wards for deliberate secondary fires over the last 10 years. The table shows evidence that the top wards in 2025 appear sporadically across other years.

The wards to see the most deliberate secondary fires over the 10 years are Birkenhead & Tranmere (99) followed by Bidston & St James (82), Norris Green (79) and St Helens Town Centre with Belle Vale with 77 each.

Of note Birkenhead & Tranmere and St Helens Town Centre do not appear in the top wards for incidents this year. For information, Birkenhead & Tranmere saw a single incident and St Helens Town Centre saw 2 incidents.

<sup>6</sup> Please see [page 14](#) for a complete list of wards in each district

Chart 4: Comparison of incidents attended by station area

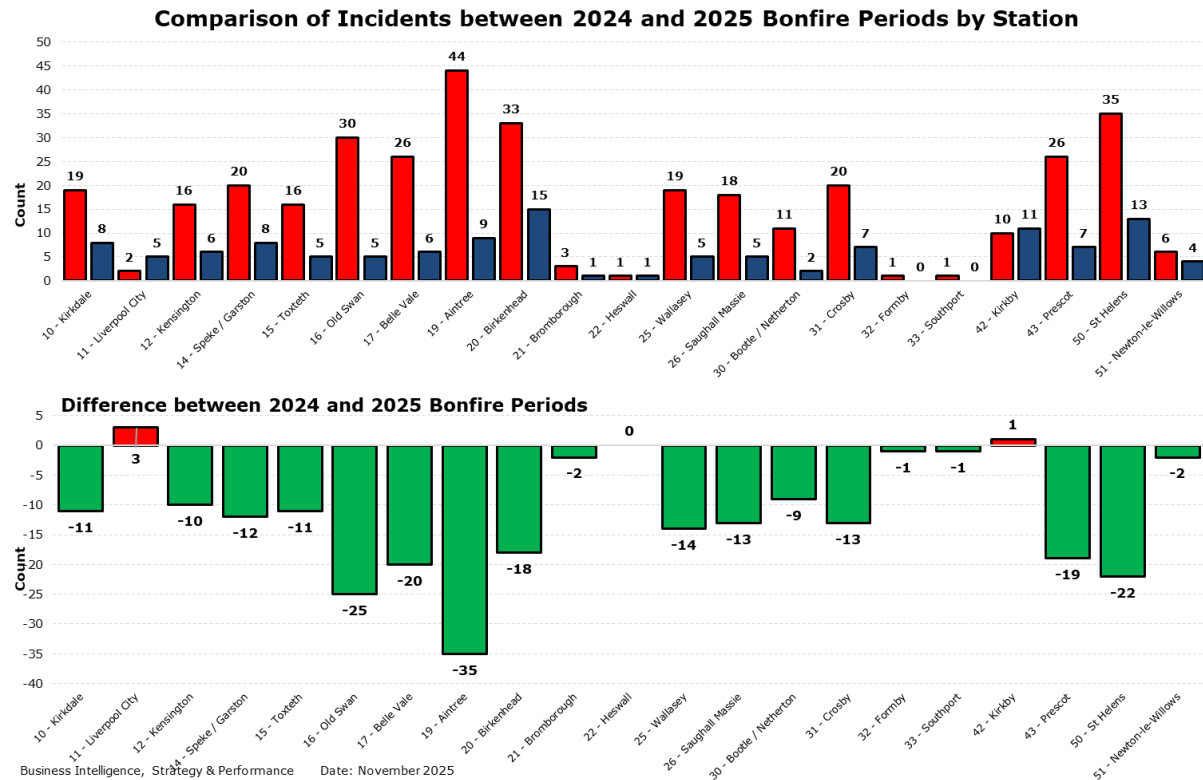


Chart 4 identifies that the vast majority of stations saw reductions in the count of incidents attended. Only 11 – Liverpool City and 42 – Kirkby had minor increases on the year before. Stations 32 – Formby and 33 – Southport saw no (zero) incidents during the 2025 bonfire period.

## 5.5 Violence at Work

Table 6: Overall counts of Violence at Work by district since 2021

District	2021	2022	2023	2024	2025
Knowsley	0	3	0	1	1
Liverpool	6	1	2	6	1
Liverpool North	3	1	2	2	0
Liverpool South	3	0	0	4	1
Sefton	1	1	1	0	0
St Helens	0	0	0	0	0
Wirral	1	0	1	3	2
<b>Grand Total</b>	<b>8</b>	<b>5</b>	<b>4</b>	<b>10</b>	<b>4</b>

During the 2025 bonfire period there were 4 incidents of violence at work, 6 fewer than the previous year. Over the 5-year period, there was an average of 6 incidents per year, with the majority (16) taking place in Liverpool. There have not been any incidents of violence at work in St Helens over the 5-year period.

It should be noted that though violence at work incidents is an unwanted aspect of the firefighter / arson officer role, it is imperative that all occurrences are

reported as this intelligence allows partner organisations to target areas of risk as well as feeds into risk assessing areas where crews & arson officer teams could be working in future.

Table 7: Details of Violence at Work during 2025 bonfire period

Address	Call Date	Station	District	Ward	Details
STANLEY ROAD, BIRKENHEAD, CH41	22/10/2025 18:32	20	Wirral	Bidston and St James	Youths throwing fireworks at crew and fire appliance
BRACKENDALE, NEW HEY ROAD, WOODCHURCH, CH49	22/10/2025 20:06	26	Wirral	Upton	Youths throwing objects at crew and fire appliance
KNOWSLEY HEIGHTS, PRIMROSE DRIVE, HUYTON, L36	05/11/2025 18:57	43	Knowsley	St. Michaels Ward	Youths targeting fireworks at crew and fire appliance
SPRINGWOOD AVENUE, ALLERTON, LIVERPOOL, L19	05/11/2025 20:51	14	Liverpool South	Springwood	Youths throwing fireworks at crew and fire appliance

5.6 Deprivation Analysis

Chart 5: Deliberate Secondary Fires in Relation to Local Deprivation<sup>7</sup>

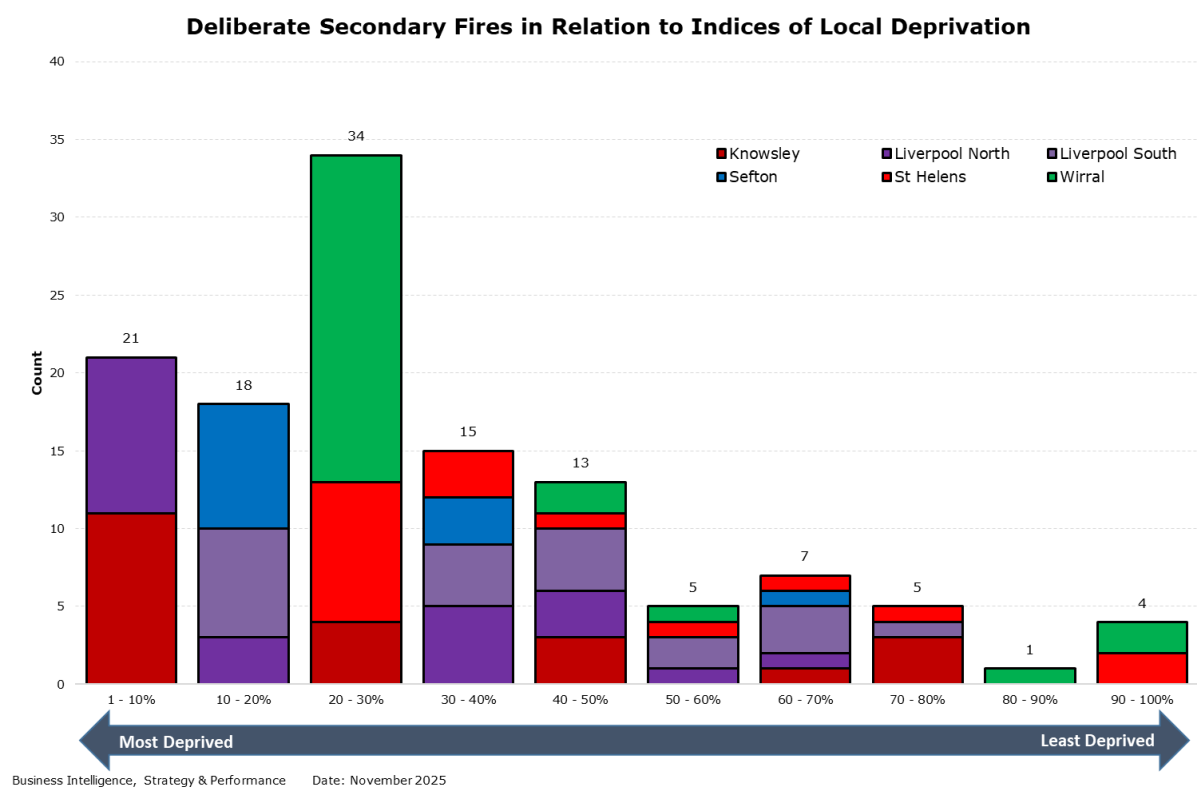


Chart 5 graphically illustrates the link between deliberate secondary fire incidents & areas of deprivation. The chart clearly identifies that more deliberate fire incidents occur in areas of high deprivation as opposed to areas of least deprivation.

<sup>7</sup> The chart axis runs from 1-10% which represents the most deprived areas of Merseyside and 91-100% which represents the least deprived

## **6.     *Appendices***

The following appendices include: a temporal analysis by day & hour with mapping including brief breakdowns of incidents attended by district, identifying hotspot areas & incidents of note.

Only wards to have seen more than 1 incident are shown in the maps.

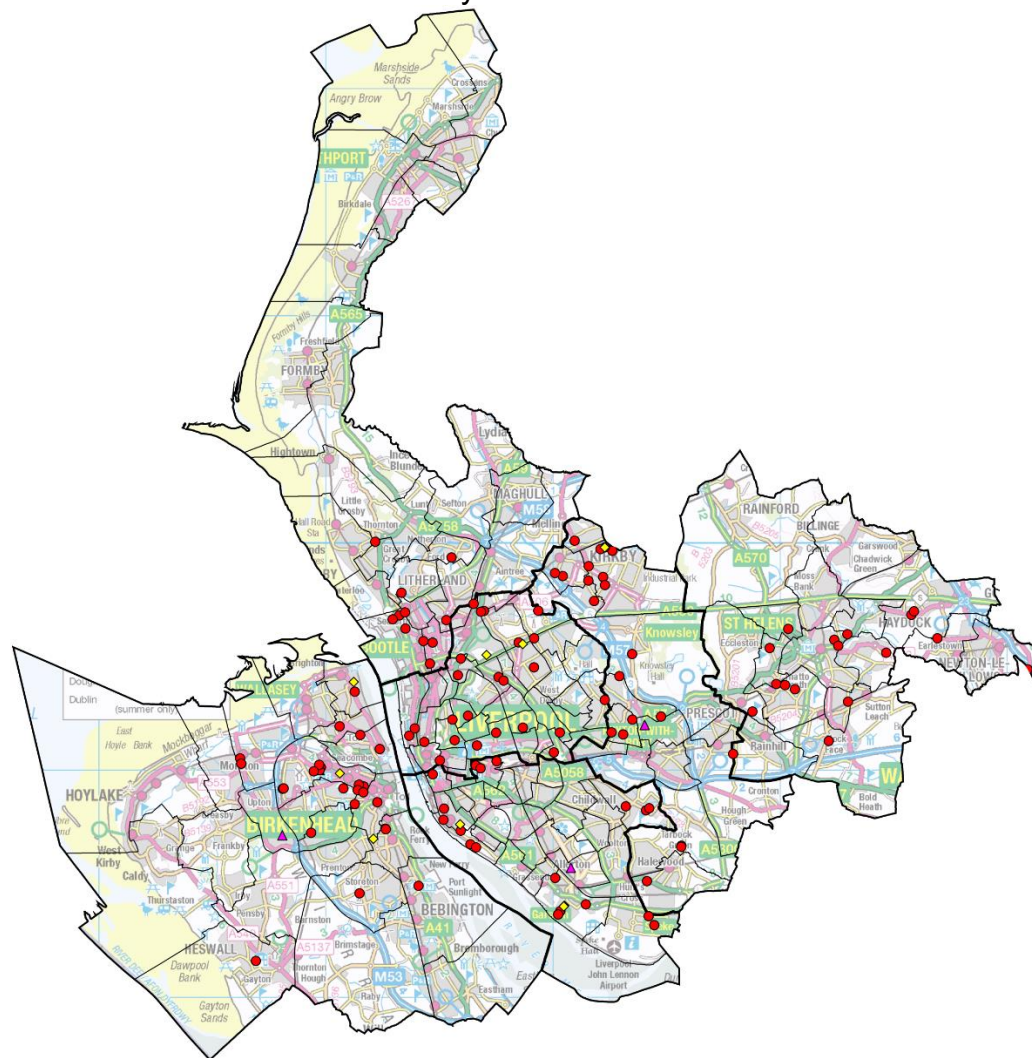
Table 8: Wards by District

Knowsley	Liverpool North	Liverpool South	Sefton	St Helens	Wirral
Cherryfield	Anfield	Aigburth	Ainsdale	Billinge & Seneley Green	Bebington
Halewood North	Broadgreen	Allerton	Birkdale	Blackbrook	Bidston & St James
Halewood South	Brownlow Hill	Arundel	Blundellsands	Bold	Birkenhead & Tranmere
Northwood	City Centre North	Belle Vale	Cambridge	Earlestown	Bromborough
Page Moss	Clubmoor East	Calderstones	Church	Eccleston	Clatterbridge
Prescot North	Clubmoor West	Canning	Derby	Haydock	Claughton
Prescot South	County	Childwall	Dukes	Moss Bank	Eastham
Roby	Croxteth	Church	Ford	Newton	Greasby Frankby & Irby
Shevington	Croxteth County Park	City Centre South	Harington	Parr	Heswall
St. Gabriels	Everton East	Dingle	Kew	Rainford	Hoylake & Meols
St. Michaels	Everton North	Edge Hill	Linacre	Rainhill	Leasowe & Moreton East
Stockbridge	Everton West	Festival Gardens	Litherland	Sutton	Liscard
Swanside	Fazakerley East	Garston	Manor	Thatto Heath	Moreton West & Saughall Massie
Whiston & Cronton	Fazakerley North	Gateacre	Meols	Town Centre	New Brighton
Whitefield	Fazakerley West	Grassendale & Cressington	Molyneux	West Park	Oxton
	Kensington & Fairfield	Greenbank Park	Netherton & Orrell	Windle	Pensby & Thingwall
	Kirkdale East	Mossley Hill	Norwood		Prenton
	Kirkdale West	Much Woolton & Hunts Cross	Park Sefton		Rock Ferry
	Knotty Ash & Dovecot Park	Penny Lane	Ravenmeols		Seacombe
	Norris Green	Princes Park	St Oswald		Upton
	Old Swan East	Sefton Park	Sudell		Wallasey
	Old Swan West	Smithdown	Victoria		West Kirby & Thurstaston
	Orrell Park	Speke			
	Sandfield Park	Springwood			
	Tuebrook Breckside Park	St Michaels			
	Tuebrook Larkhill	Toxteth			
	Vauxhall	Waterfront South			
	Walton	Wavertree Garden Suburb			
	Waterfront North	Wavertree Village			
	West Derby Deysbrook	Woolton Village			
	West Derby Leyfield				
	West Derby Muirhead				
	Yew Tree				

Map 1: Geographical Breakdown of Incidents across Merseyside

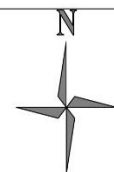
**Legend:**

- Incidents
- ▲ Fireworks
- ◆ Violence At Work
- ▭ District Boundary
- ▭ Ward Boundary



## Distribution of Deliberate Secondary Fires 2025 Bonfire Period overlaid with incidents of Violence at Work and Fireworks

Author: Business Intelligence, Strategy & Performance Date: 14/11/2025 Produced Using MapInfo  
 Map Reference:  
 © Crown copyright and database rights 2025 Ordnance Survey AC0000806710





Map 2: Geographical Breakdown of Incidents in Knowsley

**Legend:**

- Incidents
- ▲ Fireworks
- ◆ Violence At Work
- District Boundary
- Ward Boundary

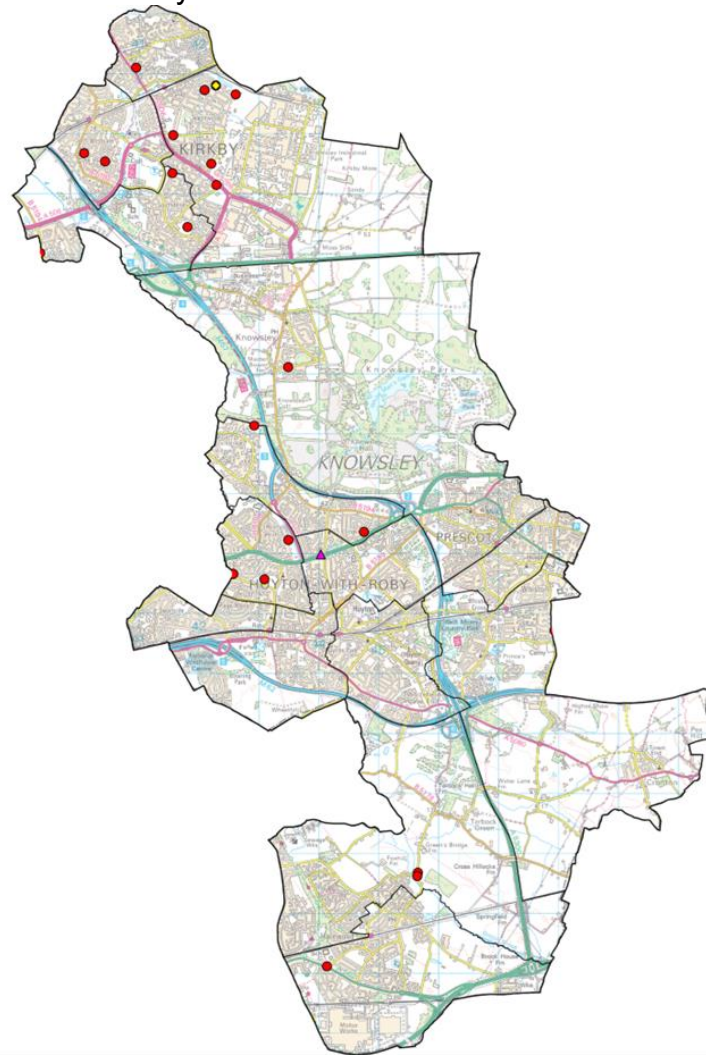
Ward	Count
Northwood	6
Page Moss	3
Halewood North	3
Cherryfield	2
Stockbridge	2
Whitefield	2

**Firework Incidents**

Ward	Count
Stockbridge Ward	1
St. Michaels	1

**VAW Incidents**

Ward	Count
St. Michaels	1



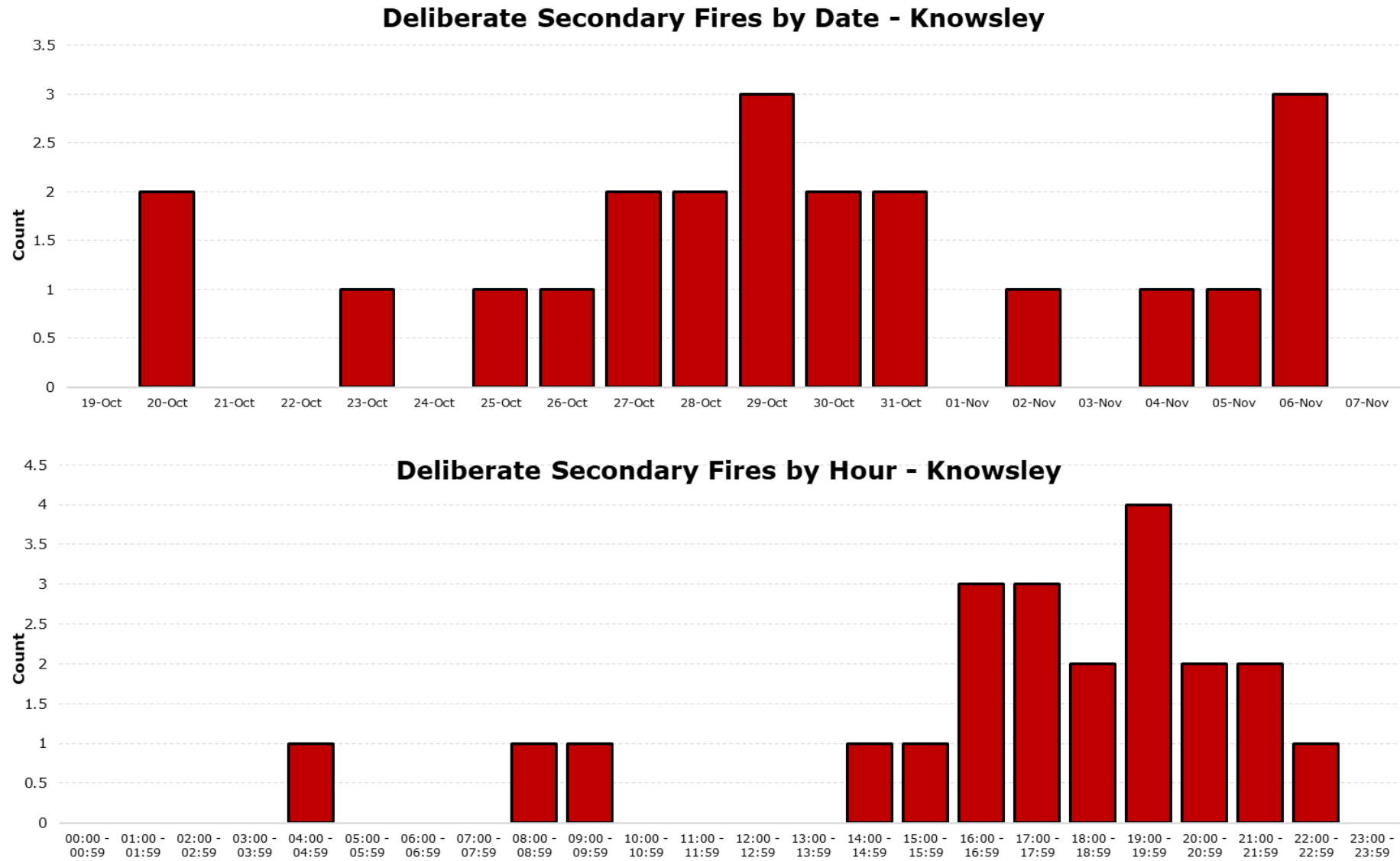
**Distribution of Deliberate Secondary Fires in Knowsley during 2025 Bonfire Period overlaid with incidents of Violence at Work and Fireworks**

Author: Business Intelligence, Strategy & Performance Date: 14/11/2025 Produced Using MapInfo  
 Map Reference:  
 © Crown copyright and database rights 2025 Ordnance Survey AC0000806710





Chart 5: Temporal Breakdown of Incidents in Knowsley



Business Intelligence, Strategy & Performance      Date: November 2025

Map 2: Geographical Breakdown of Incidents in Liverpool North

**Legend:**

- Incidents
- ▲ Fireworks
- ◆ Violence At Work
- ▭ District Boundary
- ▭ Ward Boundary



Ward	Count
Everton West	2
Kensington & Fairfield	2
Waterfront North	2
Clubmoor West	2
County	2
Fazakerley West	2

**Firework Incidents**

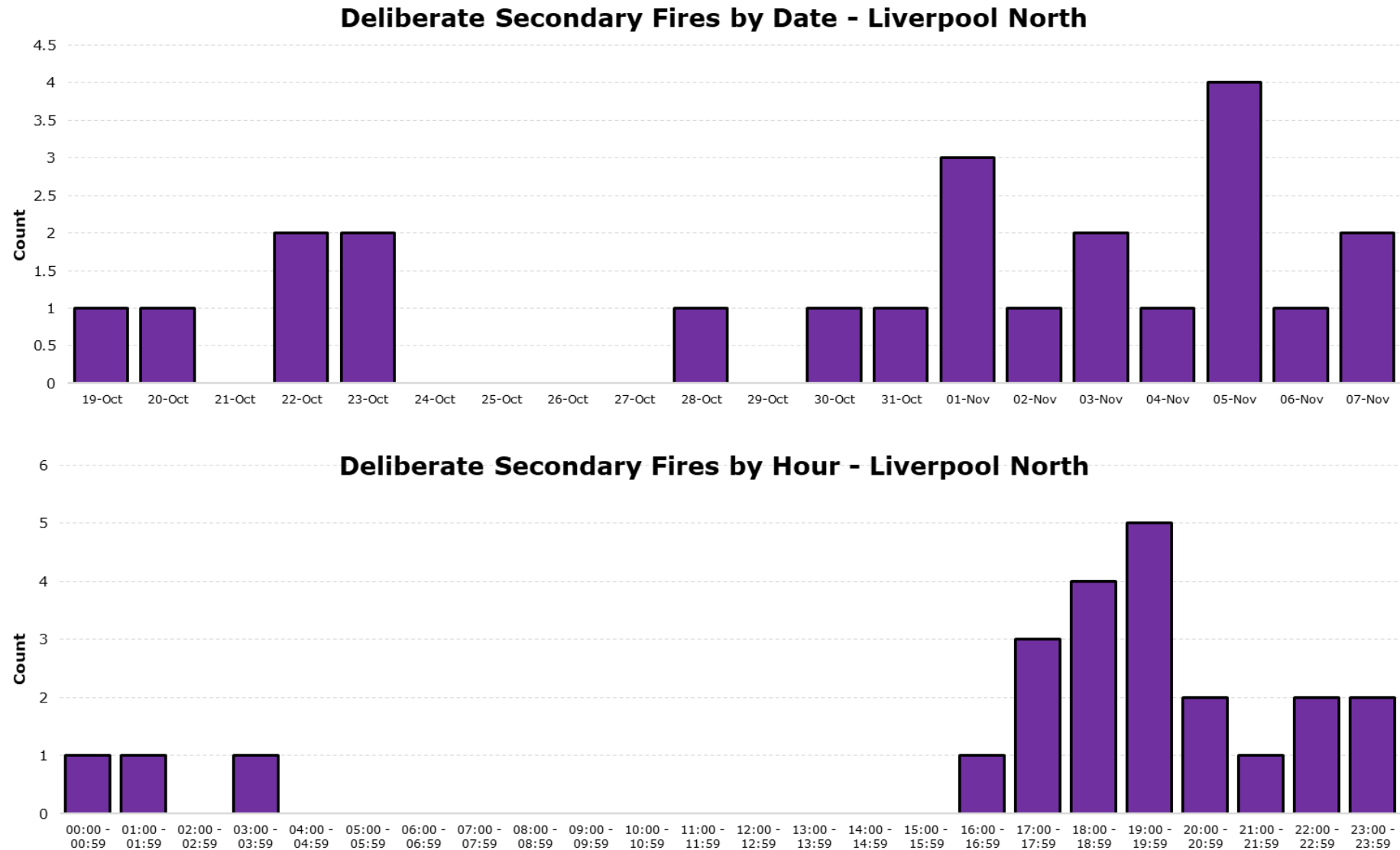
Ward	Count
City Centre North	1
West Derby Leyfield	1
City Centre North	1

## Distribution of Deliberate Secondary Fires in North Liverpool during 2025 Bonfire Period overlaid with incidents of Violence at Work and Fireworks

Author: Business Intelligence, Strategy & Performance Date: 14/11/2025 Produced Using MapInfo  
Map Reference:  
© Crown copyright and database rights 2025 Ordnance Survey AC0000806710



Chart 6: Temporal Breakdown of Incidents in Liverpool North





Map 3: Geographical Breakdown of Incidents in Liverpool South

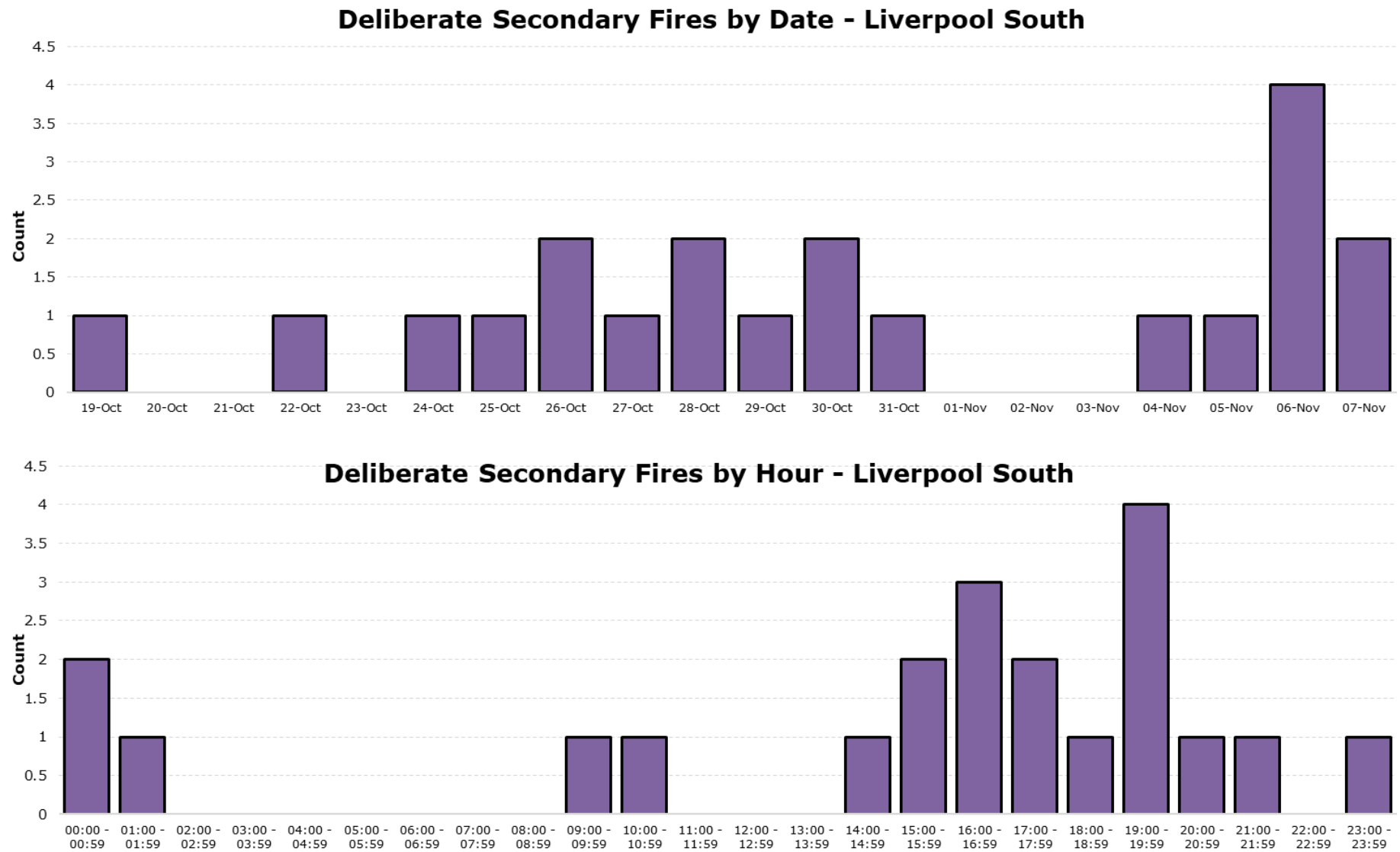


## Distribution of Deliberate Secondary Fires in South Liverpool during 2025 Bonfire Period overlaid with incidents of Violence at Work and Fireworks

Author: Business Intelligence, Strategy & Performance Date: 14/11/2025 Produced Using MapInfo  
Map Reference:  
© Crown copyright and database rights 2025 Ordnance Survey AC0000806710



Chart 7: Temporal Breakdown of Incidents in Liverpool South



Map 4: Geographical Breakdown of Incidents in Sefton

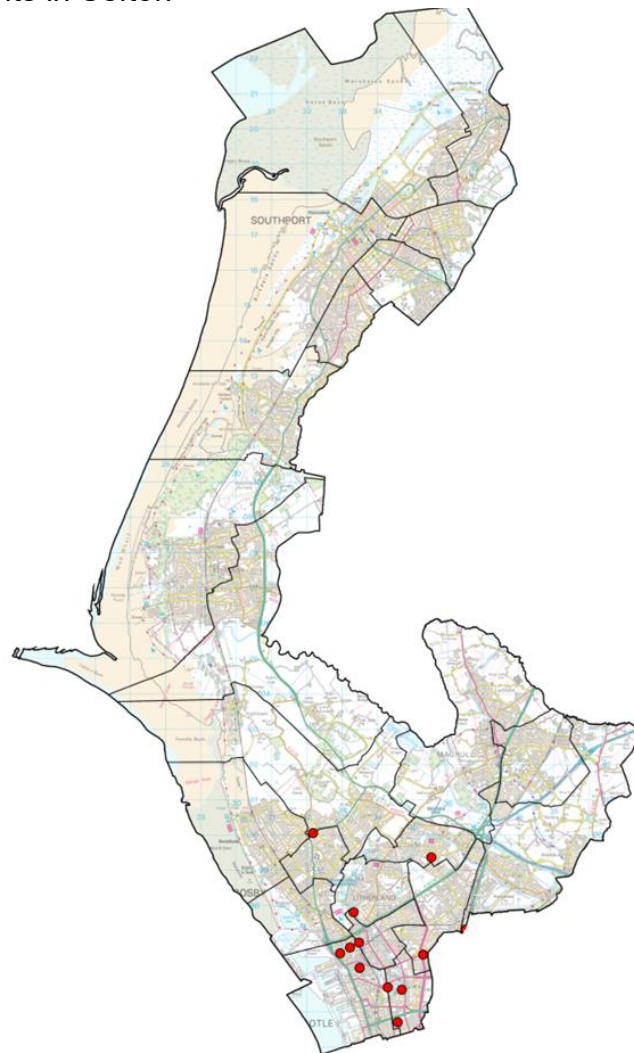
**Legend:**

- Incidents
- ▲ Fireworks
- ◆ Violence At Work
- ▭ District Boundary
- ▭ Ward Boundary

Ward	Count
Linacre	4
Derby	3

Firework Incidents

Ward	Count
Molyneux	1

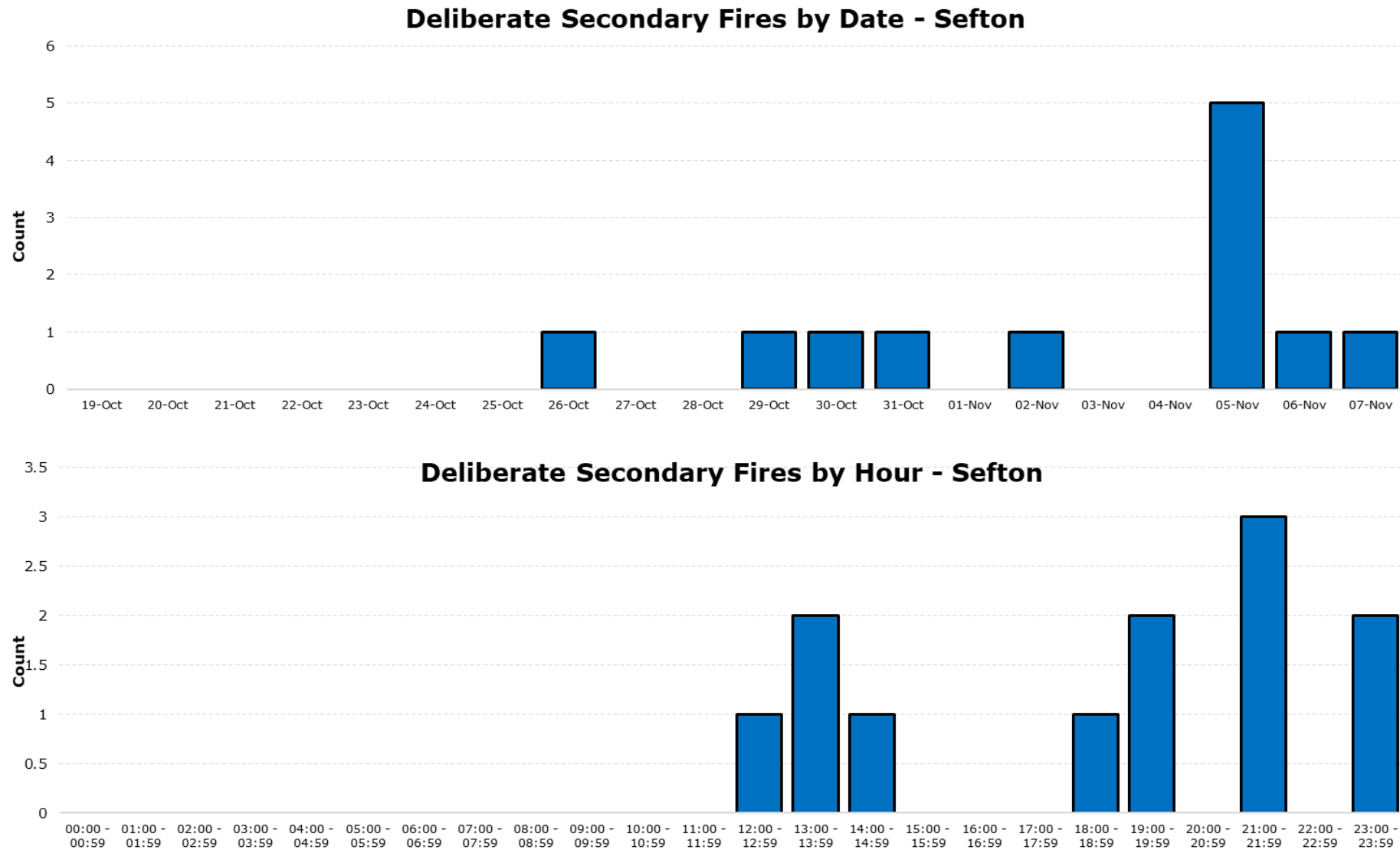


Distribution of Deliberate Secondary Fires in Sefton during 2025 Bonfire Period overlaid with incidents of Violence at Work and Fireworks

Author: Business Intelligence, Strategy & Performance Date: 14/11/2025 Produced Using MapInfo  
 Map Reference:  
 © Crown copyright and database rights 2025 Ordnance Survey AC0000806710



Chart 8: Temporal Breakdown of Incidents in Sefton



Business Intelligence, Strategy & Performance      Date: November 2025

Map 5: Geographical Breakdown of Incidents in St Helens



**Legend:**

- Incidents
- ▲ Fireworks
- ◆ Violence At Work
- ▬ District Boundary
- ▬ Ward Boundary



Ward	Count
Thatto Heath	3
Town Centre	2
West Park	2
Haydock	2

## Distribution of Deliberate Secondary Fires in St Helens during 2025 Bonfire Period overlaid with incidents of Violence at Work and Fireworks

Author: Business Intelligence, Strategy & Performance Date: 14/11/2025 Produced Using MapInfo  
 Map Reference:  
 © Crown copyright and database rights 2025 Ordnance Survey AC0000806710

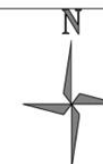
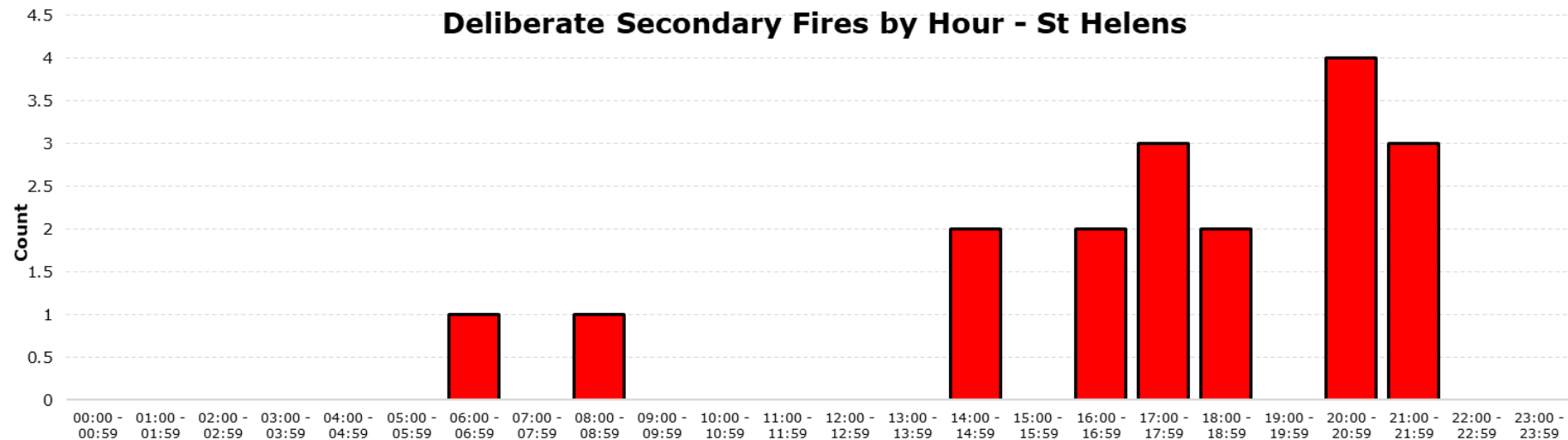
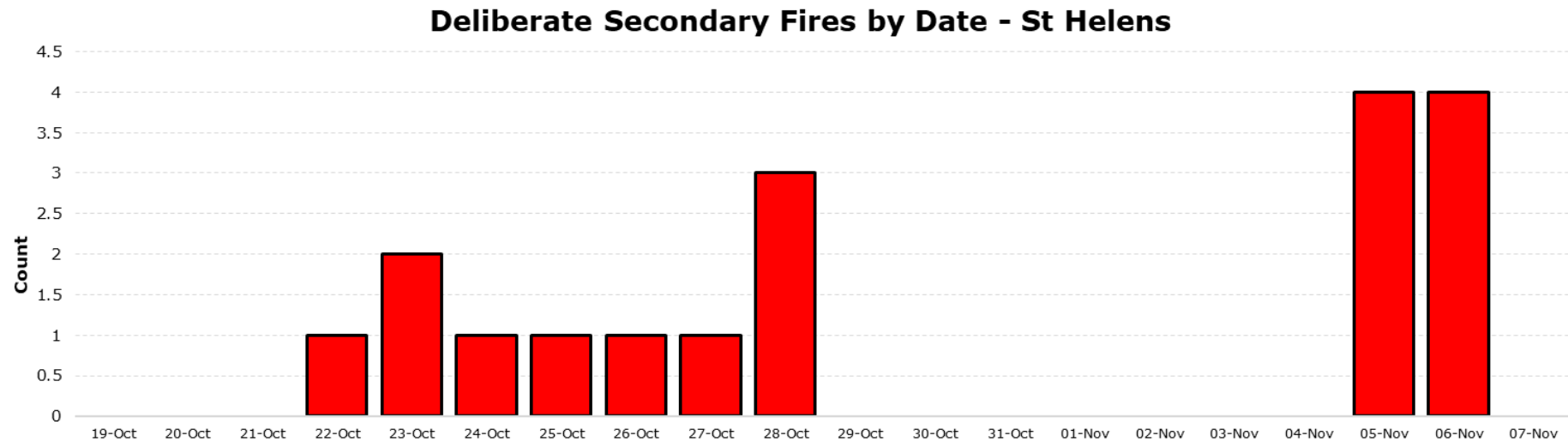
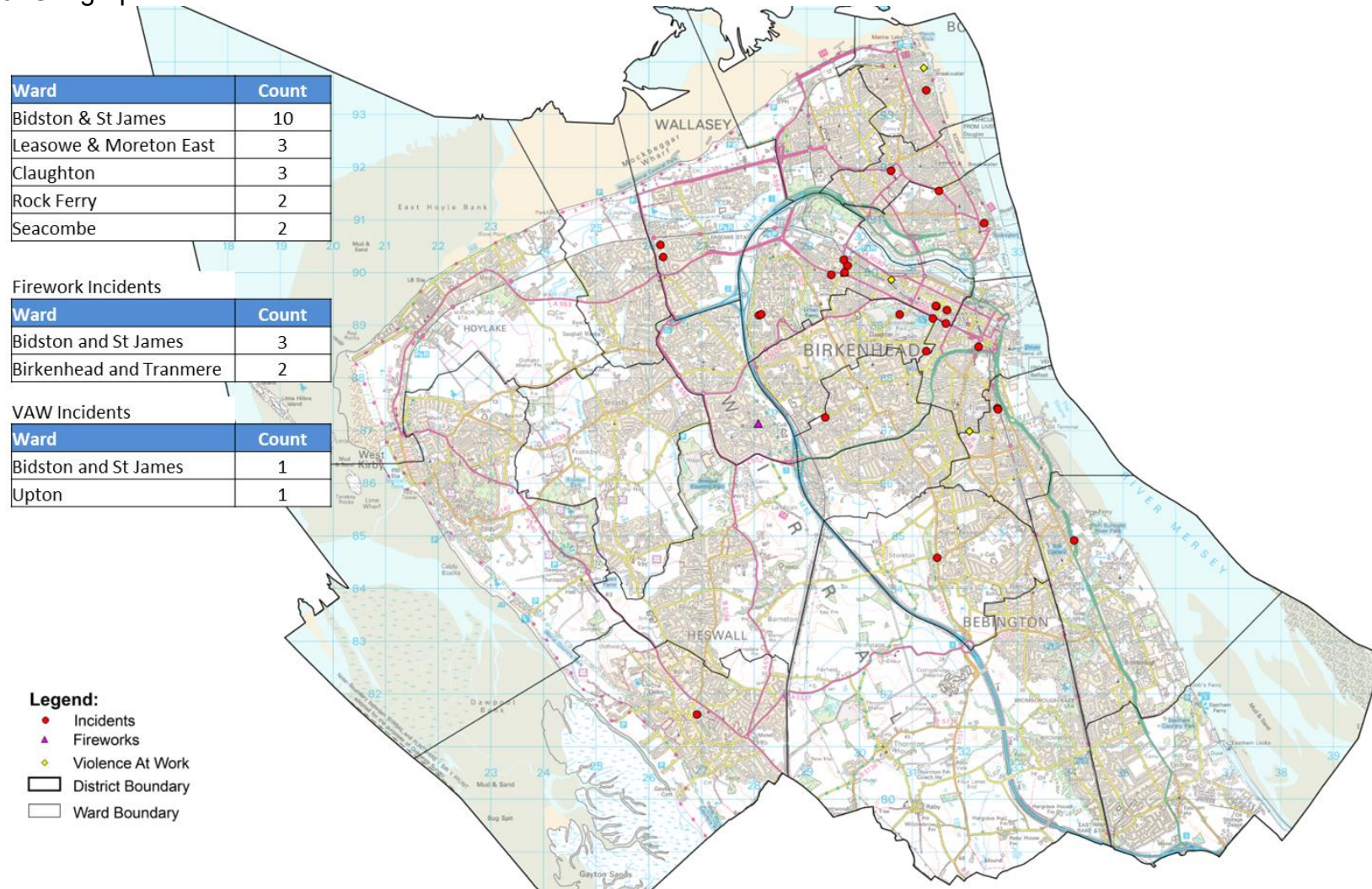




Chart 9: Temporal Breakdown of Incidents in St Helens



Map 6: Geographical Breakdown of Incidents in Wirral



## Distribution of Deliberate Secondary Fires in Wirral during 2025 Bonfire Period overlaid with incidents of Violence at Work and Fireworks

Author: Business Intelligence, Strategy & Performance Date: 14/11/2025 Produced Using MapInfo  
 Map Reference:  
 © Crown copyright and database rights 2025 Ordnance Survey AC0000806710



Chart 10: Temporal Breakdown of Incidents in Wirral

